

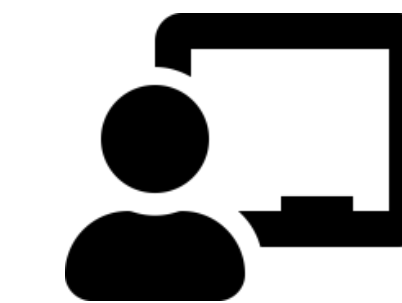
# Word Problem for **length** using **Addition** - **Customary units**





Example : 1

Maya has a blue ribbon that is 10 inches long and a yellow ribbon that is 7 inches long. How many inches of ribbon does Maya have in total?



**Solution:**

Length of the blue ribbon = 10 inches



Length of the yellow ribbon = 7 inches

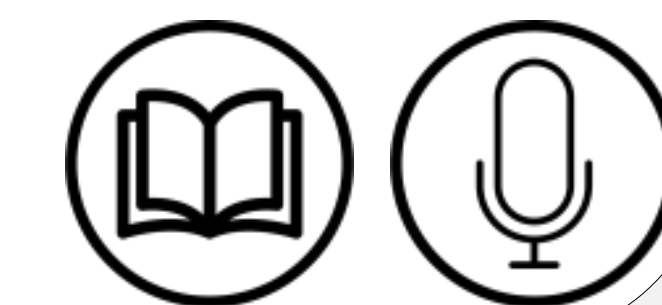


Total length of ribbons = Length of the blue ribbon + Length of the yellow ribbon

= 10 inches + 7 inches

= 17 inches

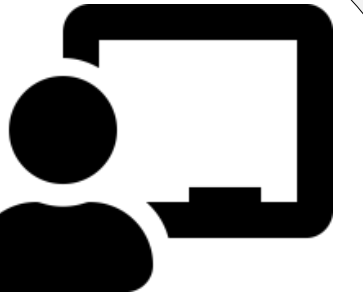
Maya has 17 inches of ribbon in total.





Example : 2

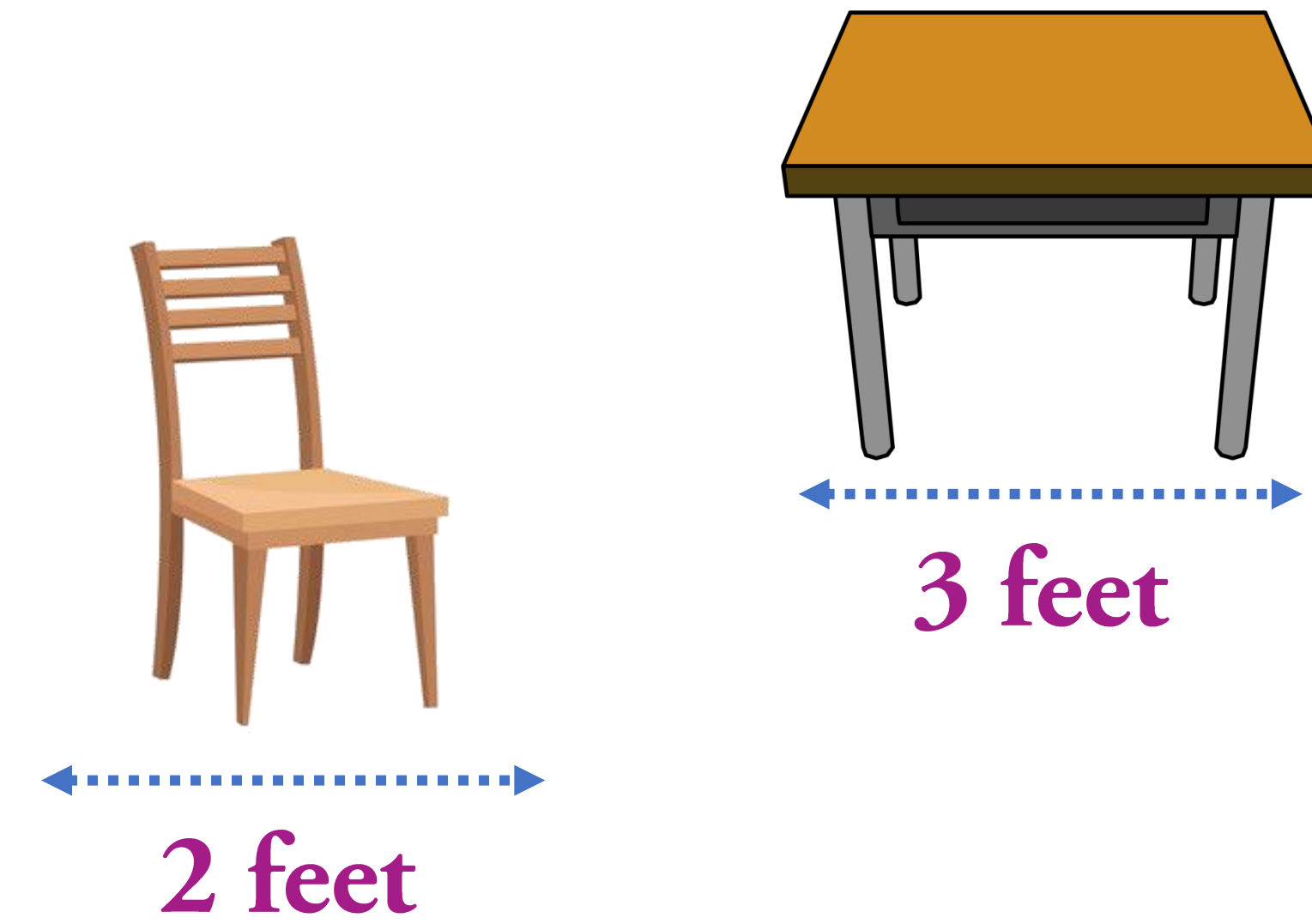
Ben's desk is 3 feet long, and his chair is 2 feet long. What is the total length of Ben's desk and chair together?



**Solution:**

Length of the desk = 3 feet

Length of the chair = 2 feet



Total length = Length of the desk + Length of the chair

= 3 feet + 2 feet

= 5 feet

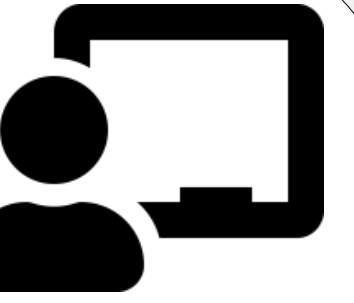
The total length of Ben's desk and chair together is 5 feet.





Example : 3

The school playground is 20 yards wide. If they add a new play area that is 15 yards wide, what will be the total width of the playground?



**Solution:**

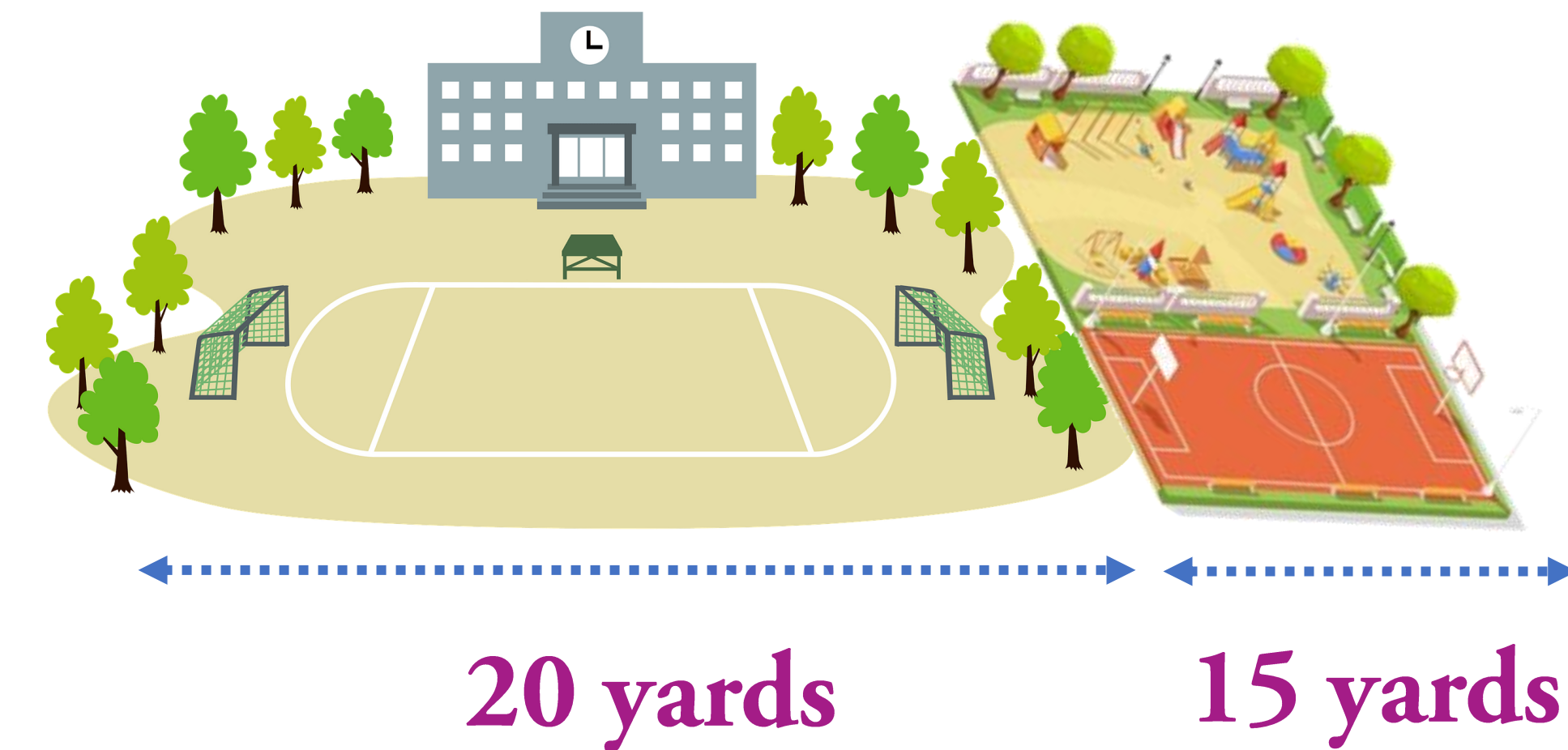
Initial width of playground = 20 yards

New play area width = 15 yards

Total width of the playground = Initial width of playground + New play area width

= 20 yards + 15 yards

= 35 yards



**Total width of the playground is 35 yards.**



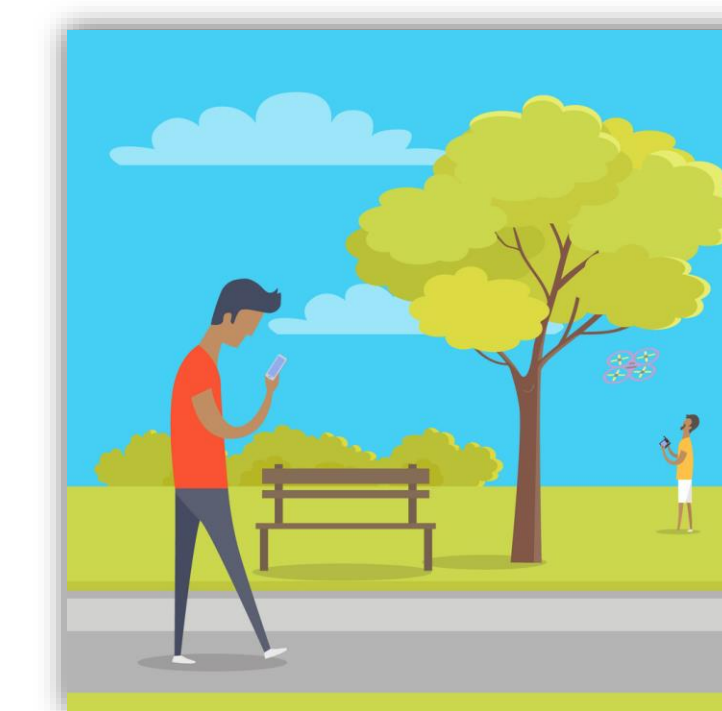
Example : 4

Jill walks 2 miles to the park and then bikes 7 miles home. How far has Jill travelled in total?

Solution:

Walking distance

= 2 miles



2 miles

Biking distance

= 7 miles



7 miles

Total distance

= Walking distance + Biking distance

= 2 miles + 7 miles

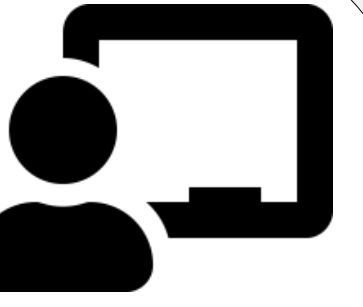
= 9 miles

Jill has travelled 9 miles in total.



Example : 5

Lily's puppy grew 4 inches last month and 5 inches this month. How many inches has the puppy grown in total?



**Solution:**

Puppy's growth of last month = 4 inches

Puppy's growth of this month = 5 inches



Total growth = Puppy's growth of last month + Puppy's growth of this month  
= 4 inches + 5 inches  
= 9 inches

Lily's puppy has grown a total of 9 inches.

